



## About the project

---

Discover a serene lifestyle in Limassol's charming Pareklisia area with our upcoming community of 22 plots and houses.

Nestled amidst the picturesque surroundings, this project seamlessly combines modern convenience with tranquility. Enjoy easy access to various amenities while relishing the peaceful ambiance.

Each thoughtfully designed residence embodies comfort and functionality.

Pareklisia in Limassol boasts a stunning natural setting with rolling hills and a peaceful ambiance. Investing in property here offers a perfect balance between serene countryside living and easy access to the vibrant city life of Limassol

## Location

Situated in Pareklisia, Limassol, this residential complex has as a primary aim to provide homeowners with a unique opportunity to seamlessly blend a serene, countryside, family-oriented lifestyle with the energetic vibrancy of modern city living.

Residents can enjoy the tranquility of the area while being close to modern amenities, making Pareklisia an attractive choice for those seeking a peaceful retreat with the conveniences of contemporary living.

Welcome to a haven where the beauty of rural Pareklisia is complemented by easy access to the highway and beach, as well as the vibrant life of Limassol.





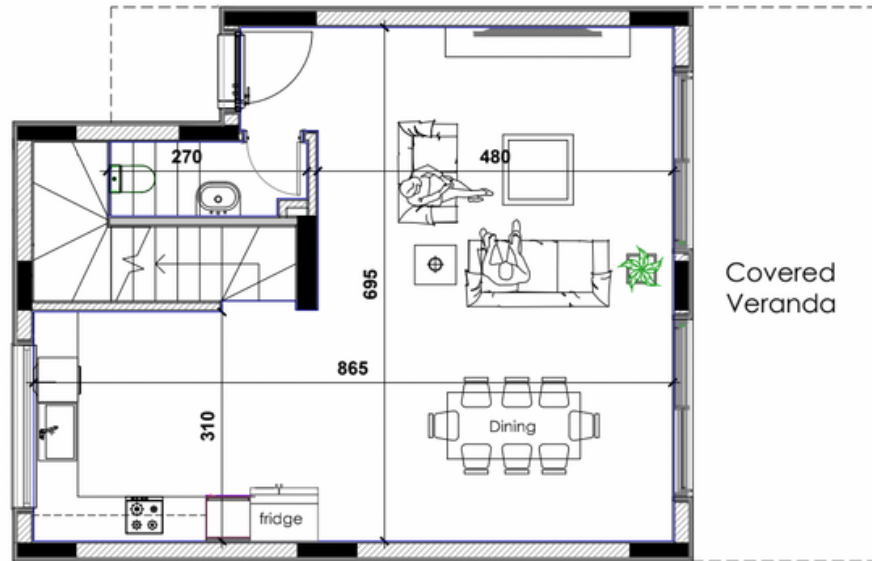
ABOUT

## OFF-PLAN HOUSES

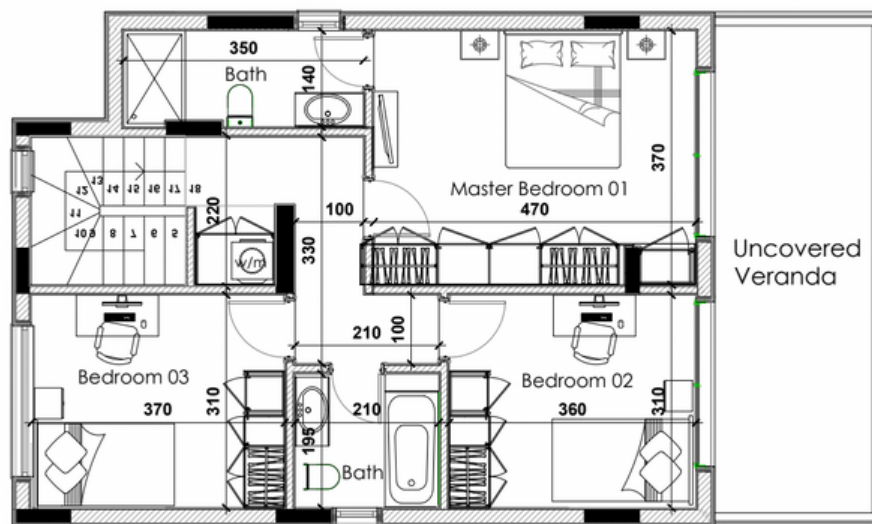
In this project, clients have the choice between two off-plan house designs. These options encompass styles ranging from contemporary to traditional, catering to diverse preferences.

Additionally, clients have the option of subtle customizations, allowing them to select materials that reflect their personal tastes and preferences, thus transforming the house into their dream home.





ground floor



first floor



## HOUSE TYPE A

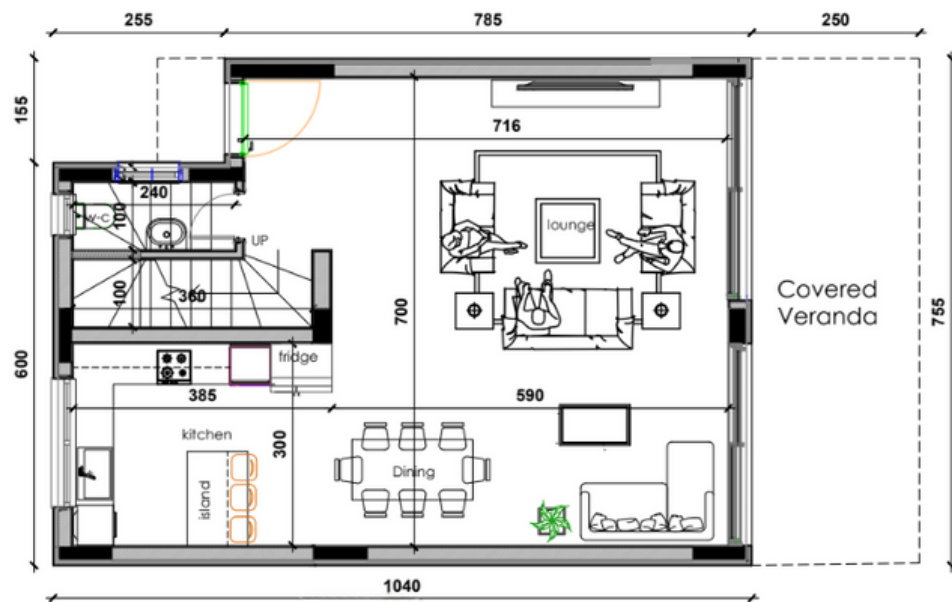
<b>Internal</b>	130m <sup>2</sup>
<b>Covered Veranda</b>	19m <sup>2</sup>
<b>Uncovered Veranda</b>	19m <sup>2</sup>

Applicable to All Plots

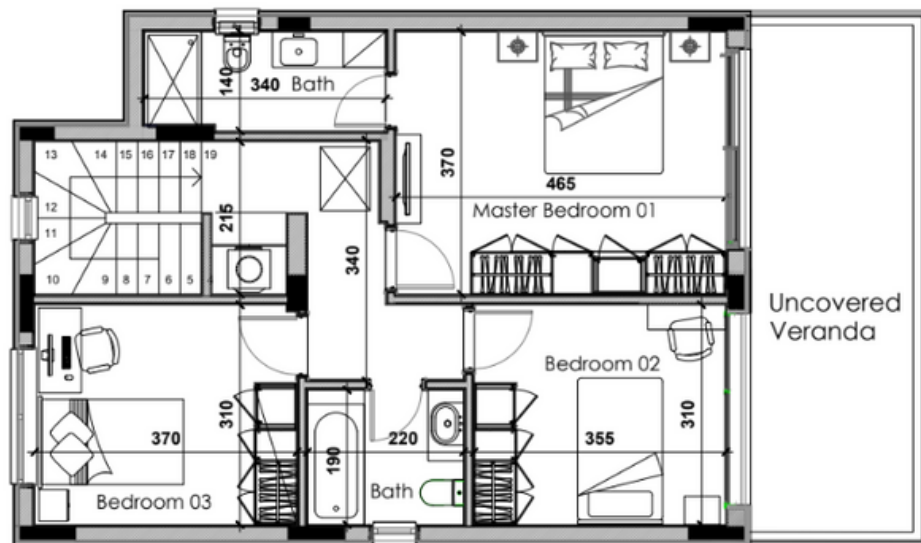
€455.000 + VAT

\*prices are subject to change without prior notice





ground floor



first floor



## HOUSE TYPE B

Internal	138m <sup>2</sup>
Covered Veranda	19m <sup>2</sup>
Uncovered Veranda	19m <sup>2</sup>

Applicable to Plots 1A-3B, 5A-6B, 7A-10B

€480.000 + VAT

\*prices are subject to change without prior notice

# technical specifications

## INTERIOR DESIGN

- High-quality Italian ceramic flooring in living room & dining room
- Parquet flooring or ceramic tiles
- Internal marble staircase
- Ceramic tiles on verandas & balconies
- Main entrance Nussbaum colour PVC

## BATHROOMS

- High-quality ceramic tiles in bathrooms
- Bath & Shower tab
- High quality stainless steel mixers & shower hands
- Chrome finish accessories
- WC

## PROVISIONS

- Air-condition (split unit system) in living room, kitchen and bedrooms
- External electric roller shutters for windows (pipes only-not wiring)
- Electric wall type heating (pipes only- not wiring)

## KITCHEN

- Custom-made high-quality melamine cabinets with internal mechanism
- Granite countertops
- Ceramic tiles for backsplash wall

## PARKING & STORAGE

- Reinforced concrete parking with ceramic tiles
- Closed garbage disposal with white aluminium doors

## WATER SUPPLY

- 180-litre high-pressure copper cylinder, thermally insulated, with a 3KW secondary electric heater
- 800-litre Polyethylene tank with UV protection for drinking water.
- Fully insulated aluminium frame
- 3-bar pressure unit for both cold and hot water.

## BEDROOMS

- High-quality parquet flooring or ceramic tiles
- Fitted wardrobes
- High-quality melamine cabinets with internal mechanism internally & externally

## BUILDING STRUCTURE

- Category C20-25 reinforced concrete frame, designed in compliance with anti-earthquake construction regulations
- Asphaltic waterproof membrane on roof
- Walls made with clay bricks

## ENERGY EFFICIENCY

- Energy efficiency class A certificate
- Photovoltaic systems 3KW installed
- Thermal insulated walls & roof
- Casement double glazing windows
- Installation of network lines and switches





# pandomus

GROUP

**Tel. 25 824382**

**Email: [mail@pandomusgroup.com](mailto:mail@pandomusgroup.com)**

**website: [www.pandomusgroup.com](http://www.pandomusgroup.com)**

**Social: [@pandomusgroup](#)**

**Ariadnis 7, Mouttagiaka,  
4531, Limassol,  
Cyprus**